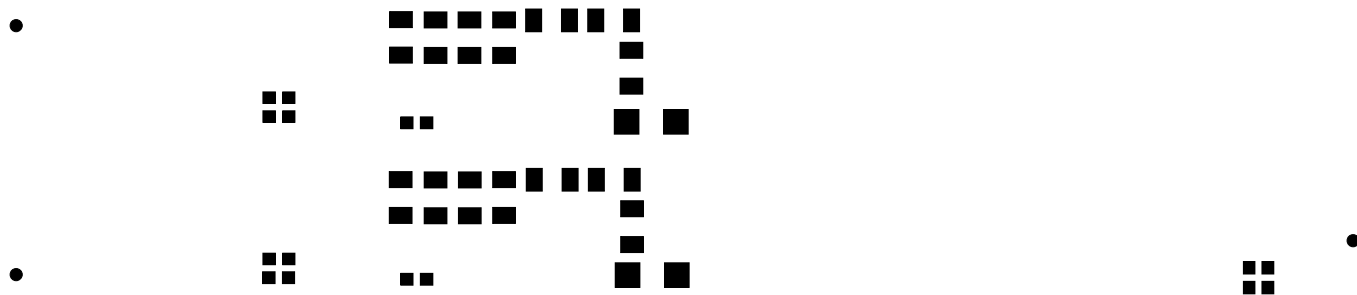


ALL ARTWORK VIEWED FROM TOP SIDE	BOARD #: TIDA-00490	REV: E2	SUN REV: Not In VersionControl
LAYER NAME = Top Paste			
PLOT NAME = TIDA-00490_AC_Binary.GTP	GENERATED : 3/31/2015	12:03:55 PM	TEXAS INSTRUMENTS



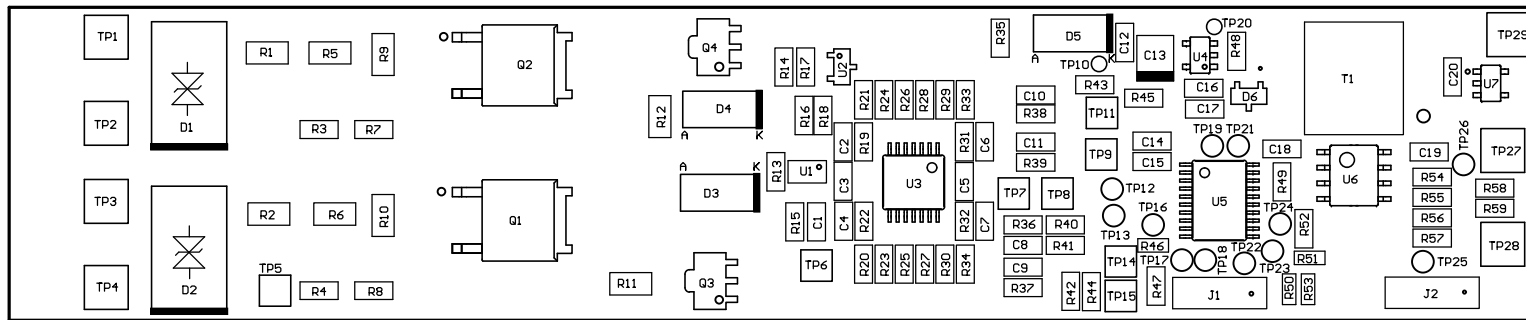
ALL ARTWORK VIEWED FROM TOP SIDE	BOARD #: TIDA-00490	REV: E2	SUN REV: Not In VersionControl
LAYER NAME = Bottom Paste			
PLOT NAME = TIDA-00490_AC_Binary.GBP	GENERATED : 3/31/2015	12:03:56 PM	TEXAS INSTRUMENTS

Z21 ■ Install label in silkscreened box after final wash. Text shall be 8 pt font. Text shall be per the Label Table in the PDF schematic.

222 ■ These assemblies are ESD sensitive, ESD precautions shall be observed.

Z23 ■ These assemblies must be clean and free from flux and all contaminants. Use of no clean flux is not acceptable.

224 ■ These assemblies must comply with workmanship standards IPC-A-610 Class 2, unless otherwise specified.

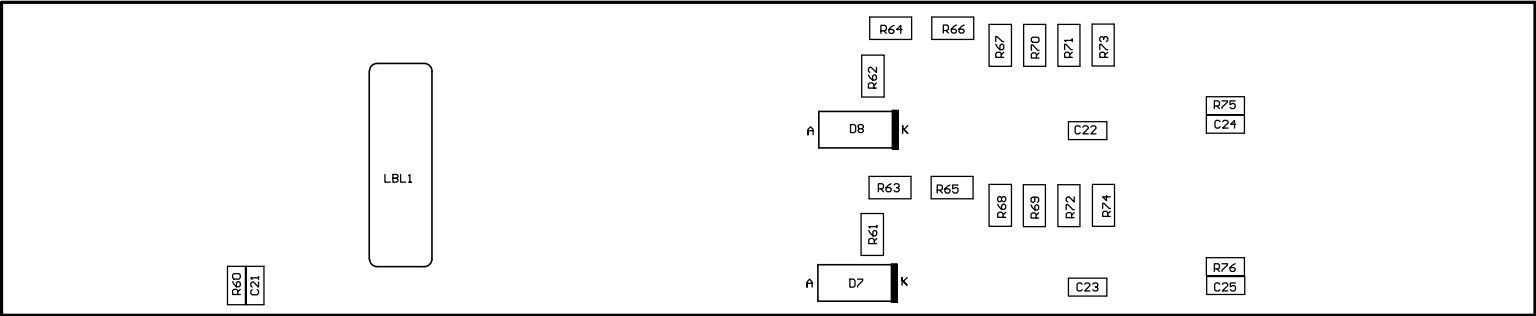


COMPONENTS MARKED 'DNP' SHOULD NOT BE POPULATED.

ASSEMBLY VARIANT:

001

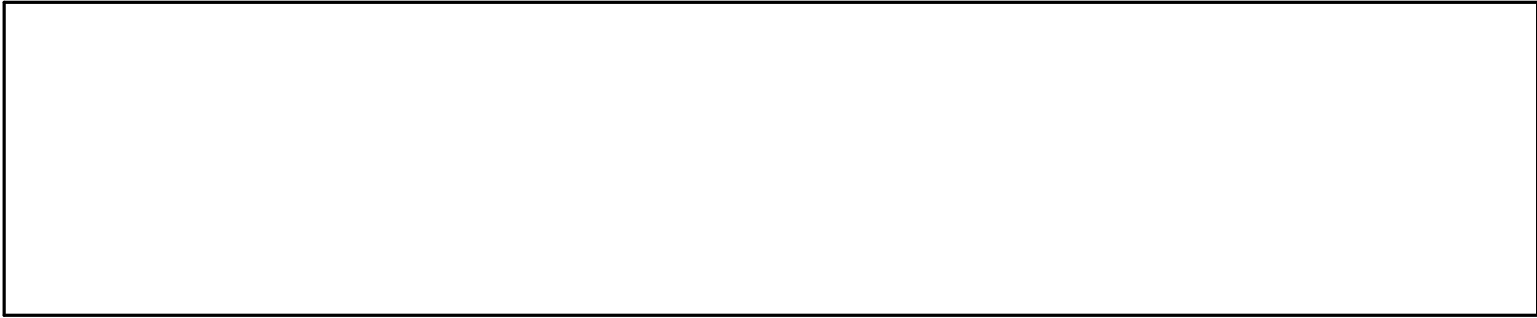
PCB VIEWED FROM TOP SIDE	BOARD #:	TIDA-00490	REV:	E2	SUN REV:	Not In VersionControl
IGNORE -> M5 Assembly Top						
PLOT NAME =	TIDA-00490_AC_Binary.GMS				GENERATED :	3/31/2015 12:39:38 PM
					TEXAS INSTRUMENTS	



COMPONENTS MARKED 'DNP' SHOULD NOT BE POPULATED.

ASSEMBLY VARIANT: 001

PCB VIEWED FROM BOTTOM SIDE	BOARD #:TIDA-00490	REV: E2	SUN REV: Not In VersionControl
	IGNORE ->M6 Assembly Bottom		
PLOT NAME =TIDA-00490_AC_Binary.GM6	GENERATED : 3/31/2015 12:39:38 PM		TEXAS INSTRUMENTS



ALL ARTWORK VIEWED FROM TOP SIDE	BOARD #: TIDA-00490	REV: E2	SUN REV: Not In VersionControl
LAYER NAME = M1 Board Outline			
PLOT NAME = TIDA-00490_AC_Binary.GM1	GENERATED : 3/31/2015 12:32:34 PM		TEXAS INSTRUMENTS